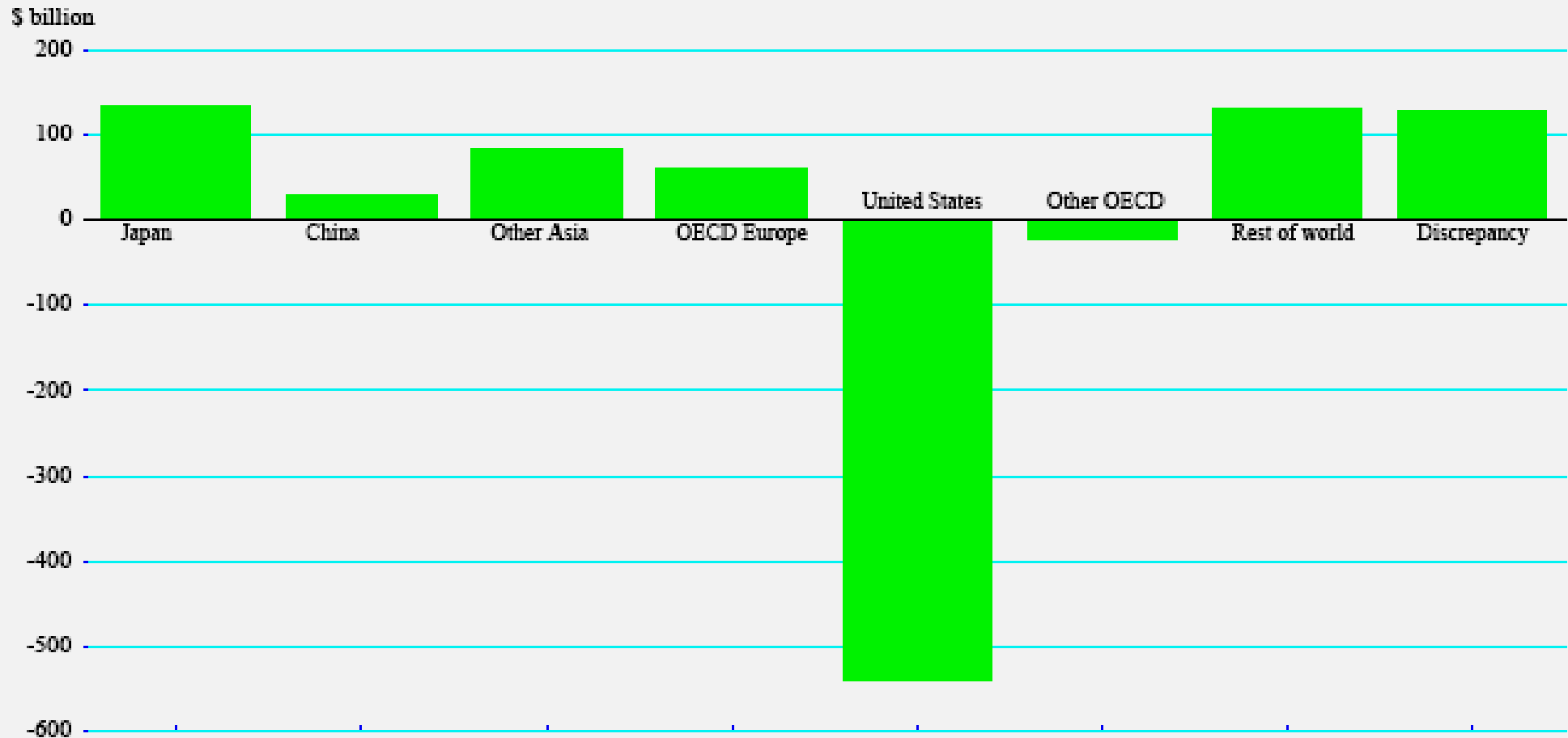


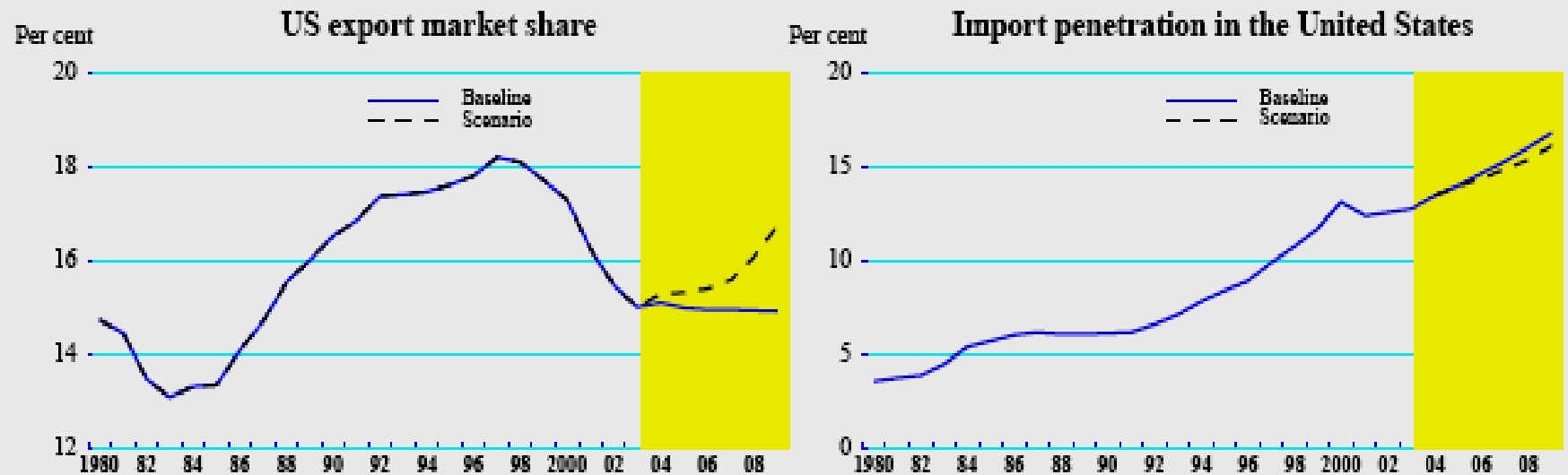
Figure V.2. Global current account balances in 2003



Notes: Other Asia includes Chinese Taipei, Hong Kong, Indonesia, Korea, Malaysia, the Philippines, Singapore and Thailand.
The statistical discrepancy reflects errors, omissions and asymmetries in balance of payments statistics on current account as well as the exclusion of data for international organizations and a limited number of countries.

Source: OECD.

Figure V.6. US market performance



Notes: US export market share is calculated as total US exports (goods and services) as a percent of total non-US world imports. Import penetration is calculated as total imports (goods and services) as a percentage of total expenditure.

Source: OECD.

U.S. INTERNATIONAL TRADE IN GOODS AND SERVICES
BALANCE OF PAYMENTS (BOP) BASIS, 1960-2003
(Billions of dollars)

Year	Exports			Imports			Trade Balance		
	Total	Goods	Services	Total	Goods	Services	Total	Goods	Services
1960	25.9	19.7	6.3	22.4	14.8	7.7	3.5	4.9	-1.4
1961	26.4	20.1	6.3	22.2	14.5	7.7	4.2	5.6	-1.4
1962	27.7	20.8	6.9	24.4	16.3	8.1	3.4	4.5	-1.2
1963	29.6	22.3	7.3	25.4	17.0	8.4	4.2	5.2	-1.0
1964	33.3	25.5	7.8	27.3	18.7	8.6	6.0	6.8	-.8
1965	35.3	26.5	8.8	30.6	21.5	9.1	4.7	5.0	-.3
1966	38.9	29.3	9.6	36.0	25.5	10.5	2.9	3.8	-.9
1967	41.3	30.7	10.7	38.7	26.9	11.9	2.6	3.8	-1.2
1968	45.5	33.6	11.9	45.3	33.0	12.3	.2	.6	-.4
1969	49.2	36.4	12.8	49.1	35.8	13.3	.1	.6	-.5
1970	56.6	42.5	14.2	54.4	39.9	14.5	2.3	2.6	-.3
1971	59.7	43.3	16.4	61.0	45.6	15.4	-1.3	-2.3	1.0
1972	67.2	49.4	17.8	72.7	55.8	16.9	-5.4	-6.4	1.0
1973	91.2	71.4	19.8	89.3	70.5	18.8	1.9	.9	1.0

1974	120.9	98.3	22.6	125.2	103.8	21.4	-4.3	-5.5	1.2
1975	132.6	107.1	25.5	120.2	98.2	22.0	12.4	8.9	3.5
1976	142.7	114.7	28.0	148.8	124.2	24.6	-6.1	-9.5	3.4
1977	152.3	120.8	31.5	179.5	151.9	27.6	-27.2	-31.1	3.8
1978	178.4	142.1	36.4	208.2	176.0	32.2	-29.8	-33.9	4.2
1979	224.1	184.4	39.7	248.7	212.0	36.7	-24.6	-27.6	3.0
1980	271.8	224.3	47.6	291.2	249.8	41.5	-19.4	-25.5	6.1
1981	294.4	237.0	57.4	310.6	265.1	45.5	-16.2	-28.0	11.9
1982	275.2	211.2	64.1	299.4	247.6	51.7	-24.2	-36.5	12.3
1983	266.0	201.8	64.2	323.8	268.9	54.9	-57.8	-67.1	9.3
1984	290.9	219.9	71.0	400.1	332.4	67.7	-109.2	-112.5	3.3
1985	288.8	215.9	72.9	410.9	338.1	72.8	-122.1	-122.2	.1
1986	309.7	223.3	86.4	450.3	368.4	81.8	-140.6	-145.1	4.5
1987	348.8	250.2	98.6	502.1	409.8	92.3	-153.3	-159.6	6.2
1988	431.3	320.2	111.1	547.2	447.2	100.0	-115.9	-127.0	11.1
1989	489.4	362.1	127.2	581.6	477.4	104.2	-92.2	-115.2	23.0
1990	537.2	389.3	147.9	618.4	498.3	120.0	-81.1	-109.0	27.9
1991	581.3	416.9	164.3	611.9	490.7	121.2	-30.7	-73.8	43.1
1992	616.5	439.6	176.8	654.6	536.5	118.1	-38.2	-96.9	58.7
1993	642.4	456.9	185.4	711.5	589.4	122.1	-69.2	-132.5	63.3

1994	702.6	502.9	199.8	799.8	668.7	131.1	-97.2	-165.8	68.6
1995	793.7	575.2	218.5	888.8	749.4	139.4	-95.1	-174.2	79.1
1996	850.9	612.1	238.8	953.7	803.1	150.6	-102.9	-191.0	88.1
1997	933.9	678.4	255.5	1,040.9	876.5	164.4	-107.0	-198.1	91.1
1998	932.6	670.4	262.1	1,095.7	917.1	178.6	-163.2	-246.7	83.5
1999	965.5	684.0	281.5	1,226.7	1,030.0	196.7	-261.2	-346.0	84.8
2000	1,070.1	772.0	298.1	1,445.4	1,224.4	221.0	-375.4	-452.4	77.0
2001	1,007.6	718.7	288.9	1,365.4	1,145.9	219.5	-357.8	-427.2	69.4
2002	974.1	681.9	292.2	1,392.1	1,164.7	227.4	-418.0	-482.9	64.8
2003	1,018.6	713.8	304.8	1,507.9	1,263.2	244.8	-489.4	-549.4	60.0

1. Compiled from official statistics of the U.S. Department of Commerce, Bureau of Economic Analysis. Data reflect revisions through 2/13/2004 in FT-900 (Exhibit 1).
2. Balance of Payments (BOP) basis for goods reflects adjustments for timing, coverage, and valuation to the data compiled by the Census Bureau. The major adjustments concern: military trade of U.S. defence agencies, additional non-monetary gold transactions and inland freight in Canada and Mexico.
3. Goods valuations are F.a.s. for exports and Customs value for imports.

Figure V.1. The US current account in historical perspective



1. GNP before 1929.

Source: OECD, US Bureau of Economic Analysis; and for the pre-1946 period Bureau of the Census: Historical Statistics of the United States, Washington DC, 1975.